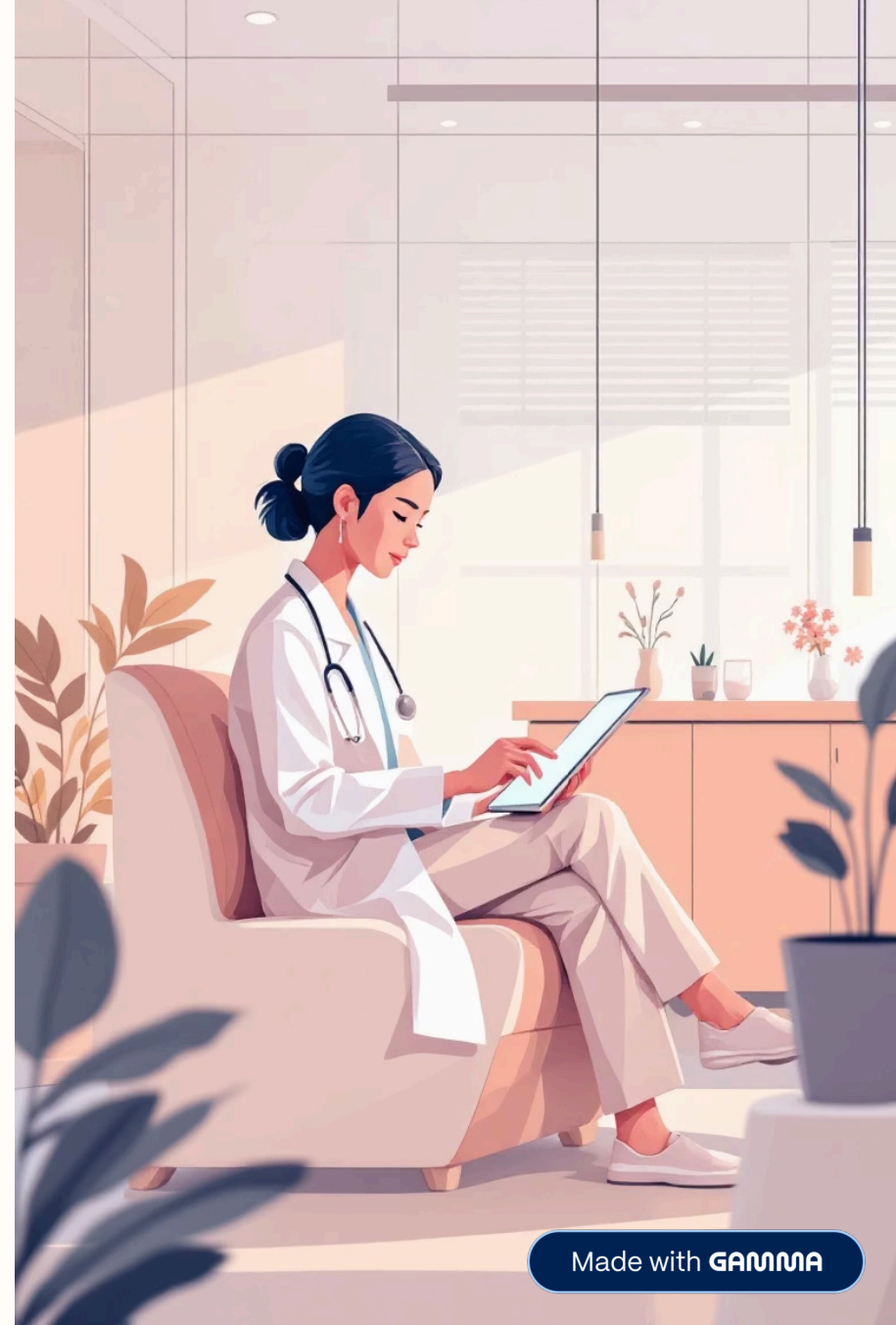


MedScribeAI: Transforming Clinical Documentation with AI

AI-powered clinical documentation and decision support, tailored to every stage of practice growth — from solo providers to enterprise health systems.



Made with GAMMA

A Solution for Every Practice Size



MedScribeAI grows with your practice, offering tailored solutions from solo providers to enterprise health systems.

Basic Plan: Streamlined Documentation for Individual Providers

\$69.99/month

Essential tools for individual providers looking to streamline documentation without complex integrations.

- Automatic SOAP note generation from patient conversations
- Reduce documentation time by up to 60%
- Improve patient engagement through focused care

Note: EHR integration available for additional fees based on vendor and system configuration.



Basic++ Plan: Supporting Growing Practices

\$299.99/month

Designed for growing practices and hospitals that need multilingual support and virtual care readiness.

Includes everything in Basic, plus enhanced capabilities to support multiple providers and diverse patient populations.

Key Features

- Live transcription of patient encounters
- Real-time translation across 30+ languages
- Telemedicine-ready integration — eliminates the need for in-room translators

Note: EHR integration available for additional fees based on vendor and system configuration.

Pro Plan: Enterprise-Level AI Clinical Support

\$799.99/month

Enterprise-level automation and AI-driven clinical support — ideal for hospitals and large care teams requiring comprehensive decision support.

Includes everything in Basic++, plus access to ClinIQ Intelligence:



ClinIQ Intelligence: Advanced Clinical AI



Differential Diagnosis

AI-generated diagnostic suggestions based on patient symptoms, medical history, and latest clinical evidence.



Clinical Insights

Real-time analysis of patient data with evidence-based recommendations for treatment plans.



Smart Assistant

AI chat support for clinical questions and workflow optimization during patient encounters.



Billing Codes

Automated CPT and ICD-10 code recommendations to maximize reimbursement and reduce claim denials.



Contact Center AI: Transforming Patient Experience

Custom Pricing

A fully autonomous front and back desk assistant powered by MedScribeAI. Ideal for high-volume clinics and healthcare systems looking to improve patient experience and administrative efficiency.

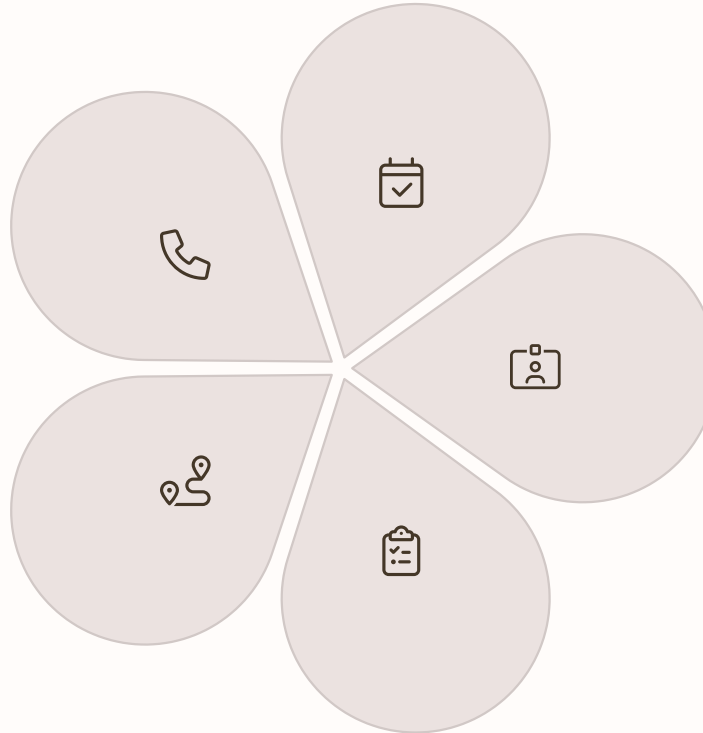
Contact Center AI: Comprehensive Capabilities

AI Voice Agents

Handle inbound and outbound patient calls with natural conversation flow and emotional intelligence.

Intelligent Triage

Smart routing to appropriate departments or clinicians based on patient needs.



Appointment Management

Scheduling, rescheduling, and automated reminders to reduce no-shows by up to 30%.

Insurance Verification

Automated eligibility checks and coverage verification before appointments.

Patient Intake

Real-time intake and follow-up coordination to streamline patient journeys.

Integration with your existing telephony and EHR systems is supported. Pricing is based on call volume and integration scope.

Subscription Plan Comparison

Features	Basic \$69.99/mo	Basic++ \$299.99/mo	Pro \$799.99/mo	Contact Center Custom
SOAP Note Generation	✓	✓	✓	✓
Live Transcription	-	✓	✓	✓
Real-time Translation	-	✓	✓	✓
Clinical Intelligence	-	-	✓	✓
AI Voice Agents	-	-	-	✓

All plans offer EHR integration for additional fees based on vendor and system requirements.

Transform Your Practice with MedScribeAI

60%

Time Saved

Reduce documentation time by up to 60%, allowing more time for patient care

25%

Revenue Increase

More accurate coding and reduced administrative costs lead to improved profitability

40%

Patient Satisfaction

Improvement in patient experience scores with more focused, attentive care

Contact our healthcare solutions team today to find the right MedScribeAI plan for your practice.